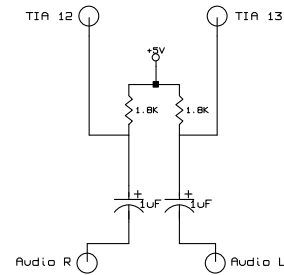


For pinouts of Atari 2600 consoles check.
<http://www.longhornengineer.com/DIY/AtariVideomods>
 TIA pins 6,9,12,13 must be lifted.



File: AtariVideoMod2_2F.sch	
Sheet: 1/1	
Title: Atari 2600 A/V Mod	
Size: A4	Date: 26 jan 2009
KiCad E.D.A. EESchema (20080825)	
Rev: 2.2F	
Id: 1/1	