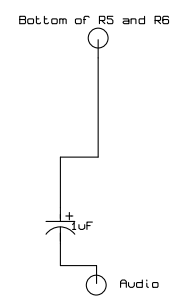


For pinouts of Atari 7800 consoles check.  
<http://www.longhornengineer.com/DIY/AtariVideomods>  
 TIA pins 9 and MARIA 43 must be lifted.



File: Atari7800VideoMod2_1.sch	
Sheet: 1/1	
Title: Atari 7800 A/V Mod	
Size: A4	Date: 26 jan 2009
KiCad E.D.A.	EESchema (20080825)
	Rev: 2.1
	Id: 1/1